

Peover Superior Parish Newsletter



New Village Hall, New AED located at the school and other news

The Parish Plan published in 2008 identified parishioners' concerns regarding the village hall. While 82% of villagers stated that they greatly valued such a facility, many regarded the current village hall as outdated, dilapidated and lacking adequate facilities and parking. Many suggestions were received, including relocating the village hall to the Parish Field. Since that time strenuous efforts have been made by the Parish Council to identify a suitable site within the village on which to relocate the hall. Many sites have been considered without success. This led the Parish Council to consider the Parish Field, which had previously been discounted, and examine whether a village hall could be located here without making too much of an impact on the open space which is greatly valued by all. At around the same time as this was being seriously considered there were two further developments. It became apparent that the school was still interested in continuing the discussions which had been held earlier but which had come to nothing and Mr Paul Read offered to sell land on Chelford Lane, behind the school playing fields, to the village.

The Parish Council is now examining these three options to see which would be most beneficial to the village and whether they would be achievable in terms of planning and finance. When the options have been evaluated the village will have an opportunity to discuss them and make suggestions before a decision can be taken on whether or not to proceed.

In undertaking this work the Parish Council is attempting to respond to the needs of the village as indicated by the responses to the Parish Plan. It is not our intention to impose any solution to the problem which does not meet with the broad approval of the village.

Your Parish Councillors:

Chairperson **01565**
Chris Hurst **723065**

Vice Chairperson **01625**
Kathy Doyle **861691**

John Caulfield **07946**
 650135

John Hehir **07870**
 555789

Jayne Rudd **01565**
 722621

Sheila Read **01625**
 860385

Phil Welch **01625**
 861261

Superfast Broadband - the Saga Continues!

The remainder of Stocks Lane, which is not yet covered by Superfast Broadband, should for the most part be included in Phase 2 of the Connecting Cheshire roll-out. It is anticipated that this work will be completed in September 2017. That leaves significant pockets in the village where Superfast Broadband will still not be available eg Patton Close/Kids' Country together with a few surrounding houses and Peover Park/Long Lane/A50. We are hoping to be able to get together two Community Fibre Partnerships for these two communities and by utilising the £350 per householder grant and local fundraising enable either FTTC or FTTP to be provided to these areas. The success of these two initiatives depends very much upon local support and enthusiasm to drive it forward. Andrew Irlam has kindly offered to spearhead the Patton Close Community Fibre Partnership. Mr Henry Brooks is also looking into a partnership for the rest.

Contact Details for the Parish Council:

Liz McGrath (Clerk)
Grange Farm
Over Peover,
Knutsford.
WA16 9RD

Phone: 01565 722762 (daytime office hours) Email:
council@overpeover.com

VACANCY FOR A COUNCILLOR

There is a vacancy for a Councillor for the Parish of Peover Superior

An election to fill the vacancy will be held if ten electors for the said Electoral area give notice to the returning officer requesting such an election within 14 days (excluding Saturdays, Sundays, Christmas Eve, Christmas Day, Good Friday or a Bank Holiday) of the date of this notice (3rd April 2017).

The address of the Returning Officer is:

The Returning Officer
Cheshire East Council
Westfields
Middlewich Road
Sandbach
CW11 1HZ

If no such notice is given the Parish Council will fill the vacancy by co-option.

Date 20th March 2017

Signed  (Clerk)

For further advice on procedure please call the elections Office at Cheshire east on 01270 685922

Free Demonstration and Instruction

Heartstart AED



We've got the defibrillator (located at the school) - now find out how to use it in an emergency.

A short introductory one hour course will be held at

THE VILLAGE HALL

on

Tuesday March 28th

At 6.45 - 7.45

All welcome

This is immediately preceding the Annual Village Meeting

at 8.00 p.m.

If you wish to attend the Heartstart demonstration please contact

Kathy Doyle on 0771513983, 01625 861691 or email
doylekathym@gmail.com

POTHOLES

Potholes in our roads are a constant problem but Cheshire East Highways team cannot repair the potholes if they do not know about them.

Report them online at www.cheshireeast.gov.uk

Or by calling
0300 123 5020

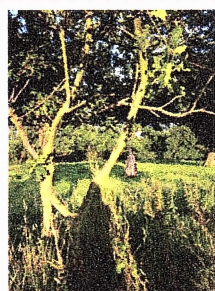
Litter pick

Come along and help tidy the village. We are meeting in the layby opposite school on Saturday 8th April at 10.30am and again on Sunday 9th April at 2.30pm. Bring gloves but litter pickers and bags will be provided.



Lets see if we can get as much as last time.

Attention dog walkers



Calling all dog walkers please dispose of your dog poo bags responsibly. More and more black bags are being left by gates, hanging in trees or just on the ground and these bags can pose a greater risk to livestock than the contents. Please if you use a poo bag, throw it in a bin, it will not biodegrade so do not leave it where horses, sheep and cattle can get it.



Village Information and events can be found at www.overpeover.com or our Facebook page www.facebook.com/Overpeover